



Reception Information Meeting

Autumn term 2023



Welcome to our Information meeting

Many thanks for your support and help in settling the children into Reception.



Adults that work in Reception

- **Red class:** Ms Fawcett, Mrs Mansfield and Mrs Samaras
- **Blue class:** Miss Brown and Miss Walsh
- Sparkle Class staff: Mrs Hassan, Mrs Chaaya & Miss Pearce
- PPA cover teachers: Mrs Mansfield and Mrs Eden

What is our Early Vision?

At Firs Farm Early Years we believe every child who joins us is unique.

All together we will nurture, stimulate and challenge our children, in an inclusive and diverse environment, in order to lay strong foundations on which to build their future learning.

The children in Reception will work on developing their skills and confidence within the

'Characteristics of Effective Learning'.

Active Learning – motivation

Playing and exploring – engagement

Creating and thinking critically – thinking



Importance of the Prime Areas

- Communication and Language
- Physical Development
- Personal, Social and Emotional Development (PSED)



How we encourage these skills: Circle time, role play opportunities, small world play, Write Dance, funky fingers, outdoor provision – bikes, physical equipment.

Specific Areas:

- Literacy
- Mathematics
- Understanding the World
- Expressive Arts and Design



School Day routines

- School starts at 8.55am and finishes at 3.30pm
- Please wait behind the pen to help your child become independent
- Our main priority is to get all children into classroom and settled.
- Please put things in writing or wait until end of the day to speak to class teacher once all the children have been dismissed.
- Please bring in water bottles with your child's name on it.

Class routines:

- Daily phonics sessions – Little Wandle
- Daily maths sessions – White Rose Maths
- Outside Area – open daily throughout the day, all children can choose to access the provision.
- Topics each term – linked to stories and understanding the world themes which we build on daily through carpet sessions during fruit time and the end of the day.
- Autumn 1: Marvellous me
- Autumn 2: Let's celebrate! (A focus on Colours, lights and festivals e.g fireworks, religious festivals – Diwali, Hanukah and Christmas).

Literacy

- Phonics programme – New Scheme: Little Wandle
- Each week a new set of sounds and tricky words will be introduced
- We will start putting the sounds of the week and the tricky words of the week on the noticeboard, which will be situated outside the pen in between Red and Blue Class.

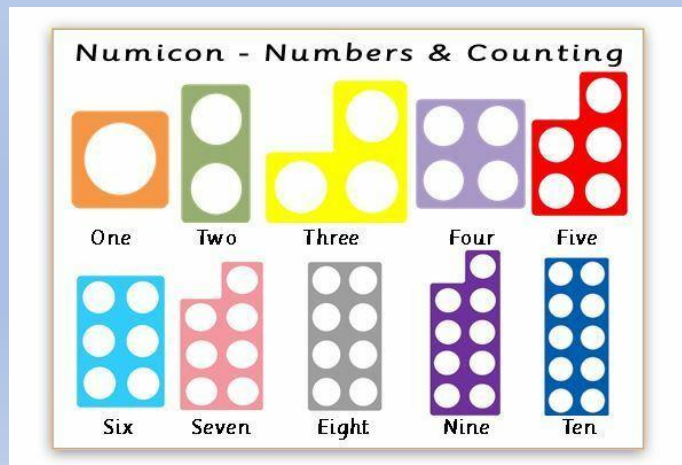
Maths: EYFS Mastery Approach

- Maths is split into two areas: **Number** and **Shape, Space and Measure**
- Maths mastery adopts the approach of gaining a deep understanding of maths. This involves **fluency** and how numbers are represented, **reasoning** – explaining how they solved the problem and **problem solving** applying their skills in a variety of contexts.
- We use concrete objects and manipulatives (numicon, multilink, counting objects) and build on this using pictorial representations before moving to the abstract method.
- We use the NCETM Numberblocks materials and White Rose maths resources.



Maths Resources and useful websites:

- Use number lines, number squares, numicon games and shapes
- Websites: Crickweb, Topmarks, Cbeebies,
- www.letters-and-sounds.com
- www.phonicsplay.co.uk



1	2	3	4	5	6	7	8	9	10
11	12	13	14	15	16	17	18	19	20
21	22	23	24	25	26	27	28	29	30
31	32	33	34	35	36	37	38	39	40
41	42	43	44	45	46	47	48	49	50
51	52	53	54	55	56	57	58	59	60
61	62	63	64	65	66	67	68	69	70
71	72	73	74	75	76	77	78	79	80
81	82	83	84	85	86	87	88	89	90
91	92	93	94	95	96	97	98	99	100

Other Lessons taught each week include...

- Music following the Charanga Scheme
- PE- Our PE lessons will begin next week and we have 2 PE Slots; **Red Class** will be on **Mondays** and **Wednesdays** and **Blue Class** will be on **Mondays** and **Fridays**.
- Understanding the World covers Geography, Science and History
- RE which will look at many religions and learning how to care and respect the world.

In Class Assessment

- Weekly writing and Maths focuses – adult support
- Tapestry will be updated weekly on what the class do. Homework will be set in the 'memos' section on Tapestry
- Weekly reading once they are given a Little Wandle book.
- Play partnering with adults
- Termly data assessment – informs our own judgements and contributes to the Early Years Foundation Profile, which tells us if your child has met the Early Learning Goals.

Class Behaviour systems

In our school we celebrate and promote positive behaviour.

- We use the UNICEF Rights Respecting Charter to promote this – put simply we talk about and encourage following the class rules and everyone having a right to play and learn.
- Each class has a Peg system – children move their named peg from the rainbow to the sun and finally the pot of gold to earn a sticker.
- Happy book – children's names are placed in the book and this is celebrated during our Happy book assembly. This will begin later on in the year.
- House points will awarded to children (Oak, Larch, Ash and Willow). The house with the most points will be announced in Happy Book.
- Sunshine/Star of the Week – a child is chosen each week who has shown positive behaviour.
- Thinking chair in each classroom for when time out maybe be needed to reflect on their behaviour. Children may be sent to other classes or the phase leader if disruptive behaviour continues to reflect on the choices made.
- Each class may have additional reward systems in place such as certificates or a marble jar.

Tapestry – Online Learning Journal

We have your consent forms and so our weekly homework will be set on Tapestry. You will all receive a email notifying you to activate your account. Download the Tapestry App to begin the journey. Please check the ‘memos’ section for the homework.

- Tapestry is an online tool that allows us to create a learning journey for your child in Reception.
- We can add photographs, videos and comments of your child’s learning and then link these to the Early Years Curriculum and Characteristics of Effective Learning. These are called observations.
- We use the Tapestry app on the iPads in school to record these observations. All practitioners in class and senior headship have an account.
- All the Practitioners working in the classroom will make observations of the children using the Tapestry App. These will be carried out both in the inside and outside area.
- Observations will be short and concise, catching a small glimpse of what the child is doing, their pupil voice and what the child can do independently.
- Observations will be a mixture of photos, videos and given your consent may be part of a group observation.



- You are able to comment and like your child's observations we have made in school. There will be an option to add a comment at the bottom of the page.
- You can add your own observations and include experiences at home that your child has accomplished by themselves or a shared experience e.g. a day out or birthday. It is also useful to write down what your child has said.
- No information from Tapestry can be shared with other people without the explicit consent of the parents or carers of those children who may be included. (Consent Form)
- Photographs or videos from Tapestry cannot be posted on a social networking site or displayed in a public place.
- Misuse of Tapestry or adding inappropriate comments will result in your parent account being withdrawn immediately.

Please see the website for our Tapestry PowerPoint which explains everything in more detail. Speak to the class teacher if you are having any problems. Remember to activate your account this week!

Home Learning



- Please check the website under the Reception Classes to access our sounds and tricky words of the week with any resources to help.
- Tapestry – A task will be set on Tapestry for you to do with your child, this may be weekly or fortnightly, therefore please check your account regularly for updates. This could be linked to our maths learning or Understanding the world topic.
- Home work will be set on **Friday and will be called ‘Weekly overview’**. This will show what the children have been doing throughout the week during the day and what you could do with them at home as homework.
- You can also use Tapestry to upload any photos or videos of your child in their home environment to give us insight into how they learn or what they like to do.

Home Learning



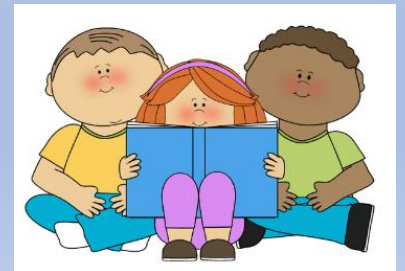
- A class library book from our book corner will be sent home on **Friday** and needs to be returned the following **Wednesday**.

Please read the book to your child. Also ask your child questions about the story such as: Which part of the story did you like best? Who was your favourite character? What do you think will happen next? Please write a comment in the yellow reading record to say that you have read the book.

- As the children begin learning their sounds, we will assess to see when your child is ready to start bringing home an oxford reading book. The class teacher will make that decision based on each child's individual needs. This will be recorded in their green reading record, please write a comment to record you have read with your child.
- Class Cuddly toy – a child will be chosen each week:

Red: Mr Monkey

Blue: Wiggles the Dog



Reminders

Please support us with the following:



- Please follow our no nuts and traffic light food policy for packed lunches
- Not too much lunch in boxes – can be overwhelming for the children.
- Donations of glue sticks, tissues, newspaper and junk modelling (boxes, cartons, tubes, pots, fabric, buttons). Please see the **noticeboard outside of the Pen** in between Red and Blue Class for the **Donation Tree**. You are invited to take a leaf with additional donations you could make (if possible). These items will include a box of tissues or a plant for example.
- Contributions greatly appreciated of £35 for the year, which goes towards our cooking, messy play, arts and crafts and science topics. Please pay via Arbor – this has already been set up.
- Please label all uniform, PE kit and footwear, we don't want things going missing
- PE kits stay in school, please ensure your child has full PE kit.

Please volunteer to be a Mystery Story



- Weekly storytelling sessions in your child's class for ten minutes at 3.00pm
- Parents and grandparents are welcome to sign up.
- This will begin after half term, please use the sheet outside your child's classroom to volunteer.
- Parent brings their own book
- Remember to keep it a surprise from your child.
- Red: Thursday
- Blue: Thursday

Please speak to the class teacher if you need to arrange an alternative day.

Gentle Reminders

- Please email or wait until the end of the day to talk to your class teacher as the mornings can be extremely hectic to talk to parents. The Reception email address is receptionyear@firsfarm.enfield.sch.uk
- Please can you kindly ensure that your child(ren) refrain from using the bikes and scooters located outside the Reception and Year 1 classrooms
- Please be aware that the large climbing frames have been deemed as unsafe and must not be used at any time.

Thank you for your time

Any questions please come and speak to us

